

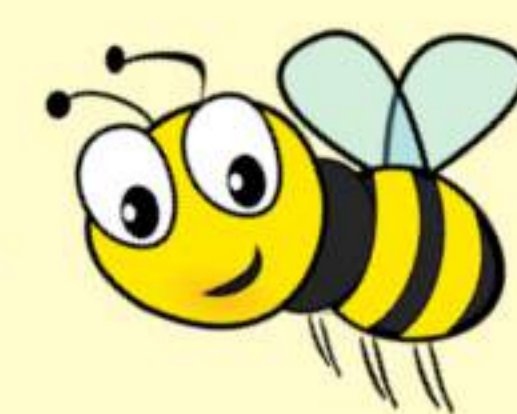
Bee on Board

with SIMPSONS



#beeonboard
Seillean air bòrd

Why Bee on Board?



We are striving to promote the planting of bee and pollinator friendly habitats in home gardens, community spaces and schools, to help reduce the decline in the bee population, and increase the wildlife habitats. Joining us by Beeing on Board, will provide much needed steps in boosting the bee population in our communities.

Did you know?

According to the RSPB, 'one hectare (or twenty basketball courts) of UK wildflower meadows can contain 5.6 million wildflowers, which is enough nectar to feed 1.5 trillion bees per day. But since the 1930s we've lost 97% of our wildflower meadows in the UK - that's almost the entirety of this vital habitat gone in a single lifetime.'



Are you
ready to
Bee on Board?



Scan our QR code to sign
up to 'Bee on Board'



BEE ON BOARD TODAY



How to get involved

We want as many people to Bee on Board with us on our bee friendly journey, whether that's at home, with your community groups or with your school. Joining us is simple, here's how you can 'Bee on Board' with Simpsons:

1. Simply sign up to our 'Bee on Board' Newsletter on the QR provided below:



2. Use this 'Bee on Board' pack to learn more about how vital bees are and how you can create a bee friendly garden and more.

Make sure to keep us up to date with your bee journey by tagging us in your photos or hashtagging

#beeonboard



Lets learn about the Bees?

There are over 270 bee species in the UK, ranging from the well known honey bee, to bumblebees and solitary bees. The pollination of bees is increasinly valuable to our UK farmers - it is estimated that it would cost them **£1.8 billion** a year to pollinate their crops manually if wild bees disappeared.

24



Give a bee struggling a drop of

50/50

water/sugar

for a boost of energy,
or gently place on a
bee friendly
flower

Just under 250



ONLY 1



Bee-rilliant Fun Facts

1 in 3

mouthfuls of our
food depends on
pollinators such
as bees

Female
bumblebees and
honey bees are
'corbiculate'
meaning they have
pollen baskets
to collect pollen
on their hind
legs



Bees In The Garden



How to encourage pollinators

1. Fill gardens with plants for pollinators

The RHS website have a great list of bee/pollinator friendly plants. As a general rule, you will be looking for nectar rich, open flowers. If you have a sunny spot in your garden, why not try and sow some wild flowers seeds.

Look out for these symbols on our plants in store



2. Your lawn matters

Allow lawn 'weeds', such as dandelions, to flower by cutting less often. Maintaining both long and short grass areas provides a potential nesting site for many species of bees.

3. Build you own 'Wee Bug Bothy'

Provide nest sites for wild bees, check out our 'The Wee Bug Bothy' to see what you can use around your garden to create a safe nesting spot.



4. Provide a water source

Bees need to keep hydrated, you can do this by having a bird bath in your garden, and submerging a couple of stones for the bees to rest and reach the water.

5. Avoid using pesticides wherever possible

If you can please avoid using any harmful pesticides and never spray an open flower where a bee could be harmed.



Planting Bee Friendly

Ideally when looking for a bee-friendly plant, you will be looking for an open petalled flower - avoid plants with double or multi-petalled flowers as they are harder for the bees to access and may not have as much pollen as other varieties.

Here's a list of some of the best plants to have in your garden this spring and summer:

Hypericum

Lavender

Hebes

Potentilla

Helleborus

Cistus

Scabious

Skimmia

Erysimum

Ceanothus

Iberis

Cornus

Euphorbia

Viburnum

Sunflowers

Find out more on our 'Planting for Pollinators' blog by scanning the QR code below:



Did you know?

The Gaelic for Bees is Seillean (pronounced 'Shellan')



Bee Identification

This is a great bee identification check list - see how many you can find.



All bumblebees shown are worker bees




<input type="checkbox"/> Buff-tailed bumblebee 14-17mm 	<input type="checkbox"/> Willoughby's leafcutter bee 12-18mm 	<input type="checkbox"/> Red mason bee 11mm 	<input type="checkbox"/> Tree bumblebee 10-16mm 	<input type="checkbox"/> White-tailed bumblebee 12-18mm 
<input type="checkbox"/> Red-tailed bumblebee 13-14mm 	<input type="checkbox"/> Tawny mining bee 10mm 	<input type="checkbox"/> Common carder bee 13mm 	<input type="checkbox"/> Wool carder bee 13mm 	<input type="checkbox"/> Hairy footed flower bee 14-15mm 

Illustration: Corinne Welch © copyright Royal Society of Wildlife Trusts 2017

Enter Our Competitions

Over the coming months we will be running competitions to help get as many schools, communities groups and individuals involved in planting Bee Friendly spaces.

The Best Bee Photos

We are looking for the BEST Bee Photos for the chance to WIN £100 to spend at Simpsons! Seeing the bees in your garden and local community is a great sign for the local bee population and we want to capture as many bee photos as possible. Here's how to enter:

- 1. Make sure you're signed up to Bee on Board**
- 2. Take LOTS of photos of your Bee Friendly Garden progress**
- 3. Send your photos to us by emailing lucy@simpsonsgc.co.uk**
- 4. A lucky winner will be chosen at random by the closing date stated on our website**

Visit our 'Bee on Board' page on our website to find out more about all the competition we are running. Additionally make sure to share your BEE JOURNEY with us by tagging us on Facebook/Instagram or using the hashtag #beeonboard

